

BLEMO® ER24

Variable speed drives for asynchronous and synchronous motors

ATEX manual

For applications in explosive gas atmosphere or in the presence of combustible dust

04/2016



BLEMO® Frequenzumrichter

Siemensstraße 4
D-63110 Rodgau – Dudenhofen

Tel.: +49 / 6106 / 82 95-0
Fax: +49 / 6106 / 82 95-20
Internet: www.blemo.com
E-Mail: info@blemo.com

The information provided in this documentation contains general descriptions and/or technical characteristics of the performance of the products contained herein. This documentation is not intended as a substitute for and is not to be used for determining suitability or reliability of these products for specific user applications. It is the duty of any such user or integrator to perform the appropriate and complete risk analysis, evaluation and testing of the products with respect to the relevant specific application or use thereof. Neither BLEMO Frequenzumrichter nor any of its affiliates or subsidiaries shall be responsible or liable for misuse of the information contained herein. If you have any suggestions for improvements or amendments or have found errors in this publication, please notify us.

No part of this document may be reproduced in any form or by any means, electronic or mechanical, including photocopying, without express written permission of BLEMO Frequenzumrichter.

All pertinent state, regional, and local safety regulations must be observed when installing and using this product. For reasons of safety and to help ensure compliance with documented system data, only the manufacturer should perform repairs to components.

When devices are used for applications with technical safety requirements, the relevant instructions must be followed.

Failure to use BLEMO Frequenzumrichter software or approved software with our hardware products may result in injury, harm, or improper operating results.

Failure to observe this information can result in injury or equipment damage.

© 2016 BLEMO Frequenzumrichter. All rights reserved.

Table of Contents



	Safety Information	5
	About the Book	9
Chapter 1	Introduction	11
	Functional safety and ATEX applications.....	11
Chapter 2	Applications for explosive atmosphere (ATEX)	13
	ATEX zones.....	14
	ATEX marking.....	15
Chapter 3	Wiring Diagrams For ATEX Applications	17
	General	18
	ATEX installation case 1: Single drive with PTC and control unit.....	19
	ATEX installation case 2: Single drive with PTC and control unit and with safety module type Preventa XPS-AF.....	20

Safety Information



Important Information

NOTICE

Read these instructions carefully, and look at the equipment to become familiar with the device before trying to install, operate, service, or maintain it. The following special messages may appear throughout this documentation or on the equipment to warn of potential hazards or to call attention to information that clarifies or simplifies a procedure.



The addition of this symbol to a "Danger" or "Warning" safety label indicates that an electrical hazard exists which will result in personal injury if the instructions are not followed.



This is the safety alert symbol. It is used to alert you to potential personal injury hazards. Obey all safety messages that follow this symbol to avoid possible injury or death.

DANGER

DANGER indicates a hazardous situation which, if not avoided, **will result in** death or serious injury.

WARNING

WARNING indicates a hazardous situation which, if not avoided, **could result in** death or serious injury.

CAUTION

CAUTION indicates a hazardous situation which, if not avoided, **could result in** minor or moderate injury.

NOTICE

NOTICE is used to address practices not related to physical injury.

PLEASE NOTE

Electrical equipment should be installed, operated, serviced, and maintained only by qualified personnel. No responsibility is assumed by BLEMO Frequenzumrichter for any consequences arising out of the use of this material.

A qualified person is one who has skills and knowledge related to the construction and operation of electrical equipment and its installation, and has received safety training to recognize and avoid the hazards involved.

Qualification Of Personnel

Only appropriately trained persons who are familiar with and understand the contents of this manual and all other pertinent product documentation are authorized to work on and with this product. In addition, these persons must have received safety training to recognize and avoid hazards involved. These persons must have sufficient technical training, knowledge and experience and be able to foresee and detect potential hazards that may be caused by using the product, by changing the settings and by the mechanical, electrical and electronic equipment of the entire system in which the product is used. All persons working on and with the product must be fully familiar with all applicable standards, directives, and accident prevention regulations when performing such work.

Intended Use

This product is a drive for three-phase synchronous and asynchronous motors and intended for industrial use according to this manual. The product may only be used in compliance with all applicable safety standard and local regulations and directives, the specified requirements and the technical data. The product must be installed outside the hazardous ATEX zone. Prior to using the product, you must perform a risk assessment in view of the planned application. Based on the results, the appropriate safety measures must be implemented. Since the product is used as a component in an entire system, you must ensure the safety of persons by means of the design of this entire system (for example, machine design). Any use other than the use explicitly permitted is prohibited and can result in hazards. Electrical equipment should be installed, operated, serviced, and maintained only by qualified personnel.

Product Related Information

Read and understand these instructions before performing any procedure with this drive.

DANGER

HAZARD OF ELECTRIC SHOCK, EXPLOSION OR ARC FLASH

- Only appropriately trained persons who are familiar with and understand the contents of this manual and all other pertinent product documentation and who have received safety training to recognize and avoid hazards involved are authorized to work on and with this drive system. Installation, adjustment, repair and maintenance must be performed by qualified personnel.
- The system integrator is responsible for compliance with all local and national electrical code requirements as well as all other applicable regulations with respect to grounding of all equipment.
- Many components of the product, including the printed circuit boards, operate with mains voltage. Do not touch. Use only electrically insulated tools.
- Do not touch unshielded components or terminals with voltage present.
- Motors can generate voltage when the shaft is rotated. Prior to performing any type of work on the drive system, block the motor shaft to prevent rotation.
- AC voltage can couple voltage to unused conductors in the motor cable. Insulate both ends of unused conductors of the motor cable.
- Do not short across the DC bus terminals or the DC bus capacitors or the braking resistor terminals.
- Before performing work on the drive system:
 - Disconnect all power, including external control power that may be present.
 - Place a **Do Not Turn On** label on all power switches.
 - Lock all power switches in the open position.
 - Wait 15 minutes to allow the DC bus capacitors to discharge. The DC bus LED is not an indicator of the absence of DC bus voltage that can exceed 800 Vdc. Measure the voltage on the DC bus between the DC bus terminals (PA/+, PC/-) using a properly rated voltmeter to verify that the voltage is <42 Vdc
 - If the DC bus capacitors do not discharge properly, contact your local BLEMO Frequenzumrichter representative. Do not repair or operate the product.
- Install and close all covers before applying voltage.

Failure to follow these instructions will result in death or serious injury.

Drive systems may perform unexpected movements because of incorrect wiring, incorrect settings, incorrect data or other errors.

WARNING

UNANTICIPATED EQUIPMENT OPERATION

- Carefully install the wiring in accordance with the EMC requirements.
- Do not operate the product with unknown or unsuitable settings or data.
- Perform a comprehensive commissioning test.

Failure to follow these instructions can result in death, serious injury, or equipment damage.

Damaged products or accessories may cause electric shock or unanticipated equipment operation!

DANGER

ELECTRIC SHOCK OR UNANTICIPATED EQUIPMENT OPERATION

Do not use damaged products or accessories!

Failure to follow these instructions will result in death or serious injury.

Contact your local BLEMO Frequenzumrichter sales office if you detect any damage whatsoever.

WARNING

LOSS OF CONTROL

- The designer of any control scheme must consider the potential failure modes of control paths and, for critical control functions, provide a means to achieve a safe state during and after a path failure. Examples of critical control functions are emergency stop, overtravel stop, power outage and restart.
- Separate or redundant control paths must be provided for critical control functions.
- System control paths may include communication links. Consideration must be given to the implications of unanticipated transmission delays or failures of the link.
- Observe all accident prevention regulations and local safety guidelines (1).
- Each implementation of the product must be individually and thoroughly tested for proper operation before being placed into service.

Failure to follow these instructions can result in death, serious injury, or equipment damage.

(1) For USA: Additional information, refer to NEMA ICS 1.1 (latest edition), Safety Guidelines for the Application, Installation, and Maintenance of Solid State Control and to NEMA ICS 7.1 (latest edition), Safety Standards for Construction and Guide for Selection, Installation and Operation of Adjustable-Speed Drive Systems.

NOTICE

DESTRUCTION DUE TO INCORRECT MAINS VOLTAGE

Before switching on and configuring the product, verify that it is approved for the mains voltage

Failure to follow these instructions can result in equipment damage.

The temperature of the products described in this manual may exceed 80 °C (176 °F) during operation.

WARNING

HOT SURFACES

- Ensure that any contact with hot surfaces is avoided.
- Do not allow flammable or heat-sensitive parts in the immediate vicinity of hot surfaces.
- Verify that the product has sufficiently cooled down before handling it.
- Verify that the heat dissipation is sufficient by performing a test run under maximum load conditions.

The product is not approved for use in hazardous areas (explosive atmospheres).

WARNING

EXPLOSION HAZARD

Only use this device outside of hazardous areas (explosive atmospheres).

Failure to follow these instructions can result in death, serious injury, or equipment damage.

About the Book



At a Glance

Document Scope

The purpose of this document is to explain how the STO (Safe Torque Off) safety function allows the variable speed drives to control and command motors installed in explosive atmospheres (ATEX).

Validity Note

NOTE: The products listed in the document are not all available at the time of publication of this document online. The data, illustrations and product specifications listed in the guide will be completed and updated as the product availabilities evolve. Updates to the guide will be available for download once products are released on the market.

This documentation is valid for the BLEMO ER24 drive.

The technical characteristics of the devices described in this document also appear online. To access this information online:

Step	Action
1	Go to the BLEMO Frequenzumrichter home page www.blemo.com
2	In the Search box type the reference of a product or the name of a product range. <ul style="list-style-type: none">• Do not include blank spaces in the reference or product range.• To get information on grouping similar modules, use asterisks (*).
3	If you entered a reference, go to the Product Datasheets search results and click on the reference that interests you. If you entered the name of a product range, go to the Product Ranges search results and click on the product range that interests you.
4	If more than one reference appears in the Products search results, click on the reference that interests you.
5	Depending on the size of your screen, you may need to scroll down to see the data sheet.
6	To save or print a data sheet as a .pdf file, click Download XXX product datasheet.

The characteristics that are presented in this manual should be the same as those characteristics that appear online. In line with our policy of constant improvement, we may revise content over time to improve clarity and accuracy. If you see a difference between the manual and online information, use the online information as your reference.

Related Documents

Use your tablet or your PC to quickly access detailed and comprehensive information on all our products on www.blemo.com.

You can download technical publications and other technical information from our website at www.blemo.com.

Terminology

The technical terms, terminology, and the corresponding descriptions in this manual normally use the terms or definitions in the relevant standards.

In the area of drive systems this includes, but is not limited to, terms such as error, error message, failure, fault, fault reset, protection, safe state, safety function, warning, warning message, and so on.

Among others, these standards include:

- IEC 61800 series: Adjustable speed electrical power drive systems
- IEC 61508 Ed.2 series: Functional safety of electrical/electronic/programmable electronic safety-related
- EN 954-1 Safety of machinery - Safety related parts of control systems
- EN ISO 13849-1 & 2 Safety of machinery - Safety related parts of control systems.
- IEC 61158 series: Industrial communication networks - Fieldbus specifications
- IEC 61784 series: Industrial communication networks - Profiles
- IEC 60204-1: Safety of machinery - Electrical equipment of machines – Part 1: General requirements

In addition, the term zone of operation is used in conjunction with the description of specific hazards, and is defined as it is for a hazard zone or danger zone in the EC Machinery Directive (2006/42/EC) and in ISO 12100-1.

Chapter 1

Introduction

Functional Safety and ATEX applications

General

The variable speed drive ER24 integrates the STO (Safe Torque Off) safety function which shuts off the motor torque safely. The use of the STO safety function allows the drive to be installed as a part of the safety-related electrical, electronic and programmable electronic control systems, dedicated to the safety of a machine or an industrial process.

The integrated safety function is compatible and certified following the information given in the Certification for Functional Safety section. It complies also with the EN 50495 (2010): Safety devices required for the safe functioning of equipment with respect to explosion risks.

The use of the STO safety function is required for the variable speed drive ATV320 to control and command motors installed in explosive atmospheres (ATEX).

The STO safety function is an ATEX certified function, according ATEX 94/9/EC directive and forthcoming 2014/34/EU directive.

Monitoring Of the ATEX Motor

The STO input(s) is (are) connected to the switching system which is embedded in the thermal sensor of the ATEX motor (or connected to the switching system of the control system if ATEX sensors of PTC type are used).

The variable speed drive ER24 intended to be used to command and control asynchronous motors shall be installed only outside potentially explosive atmospheres for the protection of explosion-protected motors.

Chapter 2

Applications for explosive atmosphere (ATEX)

What Is in This Chapter?

This chapter contains the following topics:

Topic	Page
ATEX zones	14
ATEX marking	15

ATEX Zones

Classification

The European directive 1999/92/EC (also called ATEX 137, or directive for protection of workers) classifies the ATEX zones and the type of products that they are compatible with. The user should define the ATEX zone in which the ATEX motor will be installed.

The product is not approved for use in hazardous areas (explosive atmospheres).

Different wiring diagrams for installation are suggested in this document. They are compatible with the use of motors in ATEX zones 1/21 or

The following table summarizes characteristics related to each ATEX zone

Atmosphere	Zone	Definition	Presence of explosive atmosphere per year
Gas	0	Explosive atmosphere is present continuously, for long periods or frequently due to malfunctions	> 1000 h
Dust	20		
Gas	1	Explosive atmosphere is likely to occur due to expected malfunctions	10...1000 h
Dust	21		
Gas	2	Explosive atmosphere is unlikely to occur or, if occurring, is likely to only be of short duration and not in normal duty	< 10 h
Dust	22		

NOTE: Neither electrical equipment nor motors can be installed in ATEX zone 0 or 20.

General

The European directive 94/9/EC and forthcoming 2014/34/UE (also called ATEX 95, or product directive) defines applicable requirements for ATEX products and requirements for procedure of certification.

OEMs, installers, users are responsible for the choice and the commissioning of the products they use in order to realize the ATEX protection of systems that they design or systems that they implement.

- The motor needs to be ATEX certified EX "d" and compatible for use in zone 1/21 or 2/22.
- The motor shall be equipped with thermal sensor(s) with embedded switching system ATEX certified, or shall be equipped with thermal sensor(s) ATEX certified, associated to a control unit (Level of protection intrinsic safety "i"), which is to be also ATEX certified.

NOTE: Usually, the control unit is designed to be used outside the hazardous ATEX zone. Then it is possible to install the control unit near the variable speed drive, outside the hazardous ATEX zone.

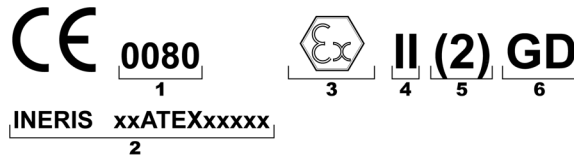
The switching system, embedded into the thermal sensor, or included into the control unit of the thermal protection of the ATEX motor, shall be connected to the STO input of the variable speed drive ER24. When the excessive temperature of the ATEX motor is reached, the control system triggers the STO safety function. The electrical power of the motor is removed to help to ensure a temperature of the motor frame below the maximum temperature depending on the gas or the dust atmosphere in which the ATEX motor is installed.

When the ATEX application needs to apply the STO safety function, and prevent automatic restart, then a safety module (type Preventa) is to be used. The suggested wiring diagrams describe how the switching system, embedded into the thermal sensor or included into the control unit, is connected to the safety module. The output of the safety module must be connected to the STO input of the variable speed drive ER24.

ATEX Marking

Identification

Single marking complies with all of the applications covered by the ATEX certification of the drive. The variable speed drive BLEMO ER24, ATEX certified, can be recognized by the specific marking reproduced hereafter.



- 1 **0080** is the identification number of the notified body INERIS, which has delivered the notifications for systems of production quality assurance of production lines for drives, in compliance with the standard EN 13980.
- 2 **INERIS xxATEXxxxx** is the identification code of the EC Type examination certificate issued by the notified body INERIS to demonstrate the compliance of the variable speed drive with the requirements of the ATEX 94/9/EC directive.
- 3 Logo related to the identification of an ATEX product.
- 4 **II** relates to the use of products for ATEX application in surface industries. (ATEX applications for mines industries are prohibited)
- 5 **(2)** Parenthesis identifies the variable speed drive ER24 as a product associated with the control & command of an ATEX motor installed in a hazardous zone. The number 2 identifies the ATEX motor as a product of category 2 for use in ATEX zones 1 or 21. Motors of category 3 for use in ATEX zones 2 or 22 are also covered by this marking.
- 6 **G** for Gas, is related to ATEX applications in atmospheres with explosive gas. **D** for Dust, is related to ATEX applications in atmospheres with a mixture of explosive dust.

Chapter 3

Wiring diagrams for ATEX applications

What Is in This chapter?

This chapter contains the following topics:

Topic	Page
General	18
ATEX installation case 1: Single drive with PTC and control unit	19
ATEX installation case 2: Single drive with PTC and control unit and with safety module type Preventa XPS-AF	20

General

Requirements

Requirements provided by the ATEX standards for installation should be fulfilled. Also follow the requirements below:

- IEC 60079-14 Electrical installations design, selection and erection, for applications in atmospheres with explosive gas,
- Local regulation, wiring rules for applications in atmospheres with presence of gas or dust.

Wiring Diagrams Presentation

The diagrams in this document for installation and commissioning of variable speed drives ER24 for ATEX applications are based on thermal sensors (for example a PTC sensor) embedded in the ATEX motor and an intrinsic safety "i" control unit. The control unit is a device which converts in a switching function the variation of the characteristic of a thermal sensor.

ATEX Periodictest

The complete functional safety loop (which starts from the ATEX motor thermal sensor up to the STO safety function embedded in the drive), shall be activated at least once a year for preventive maintenance purposes in order to check that the electrical power is always automatically removed from the motor in case of excessive temperature.

Shielded Cables on I/O

WARNING

UNEXPECTED EQUIPMENT OPERATION

- Use shielded cables for all digital and analog I/O and communication signals.
- Ground cable shields at a single point.
- Route communication and I/O cables separately from power cables.

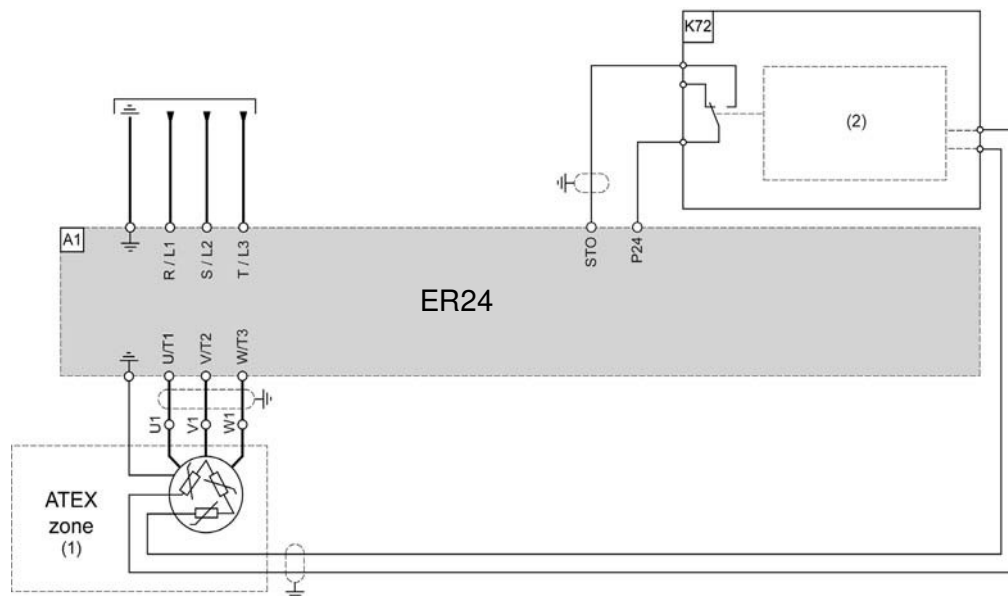
Failure to follow these instructions can result in death, serious injury, or equipment damage.

ATEX Installation Case 1: Single drive with PTC and Control Unit

Description

- ATEX motor in Zone 1 or 21 or 2 or 22
- STO input used for protection of the ATEX motor sensor only
 - SIL2 capability according to IEC 61508
 - Stop category 0 according to IEC 60204-1 without protection against supply interruption or voltage reduction and subsequent rotation
- Thermal protection of the ATEX motor by using an ATEX thermal sensor (PTC type, without embedded switching system), and a control unit for the PTC conversion, including the switching system.

Wiring Diagram



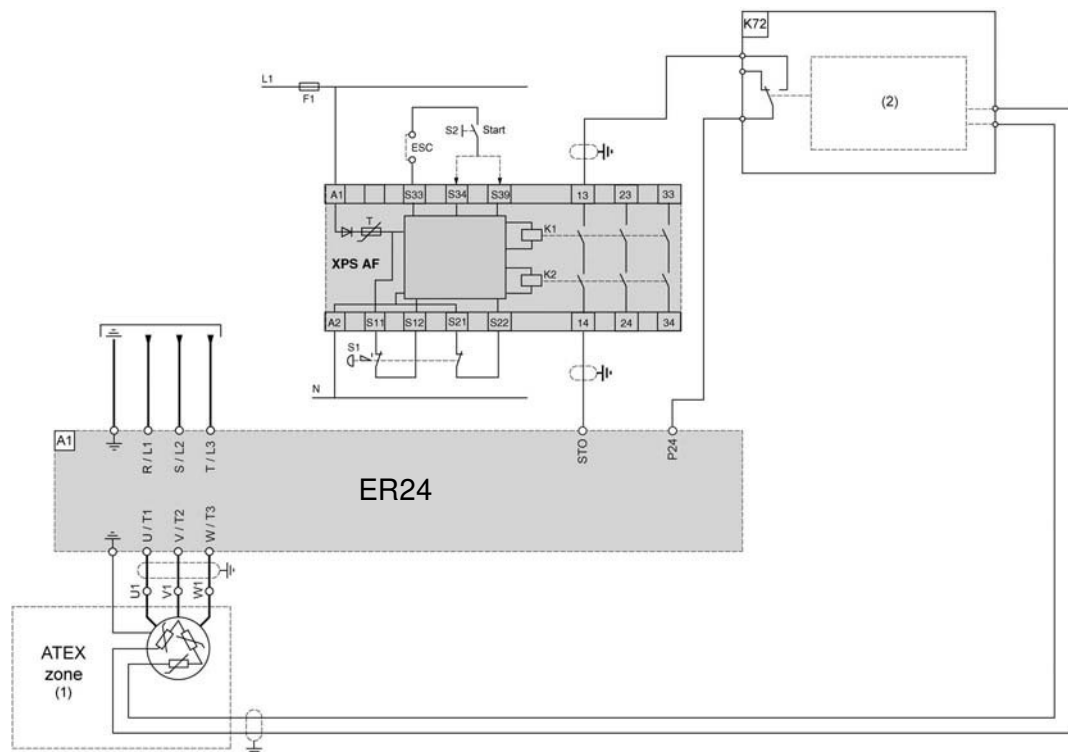
- (1) ATEX Zone 1/21 or 2/22 with at least 1 thermal sensor PTC type
(2) ATEX certified control unit conversion / insulation / switching system with Level of protection intrinsic safety "i".
(K72) ATEX certified PTC relay

ATEX Installation Case 2: Single drive with PTC and Control Unit and with Safety Module Type Preventa XPS-AF

Description

- ATEX motor in Zone 1 or 21 or 2 or 22
- STO input used for protection of the ATEX motor
 - SIL 2 capability according to IEC 61508
 - Stop category 0 according to IEC 60204-1
 - Designated architecture category 3, PLd according to ISO 13849-1
- Thermal protection of the ATEX motor by using an ATEX thermal sensor (PTC type, without embedded switching system), and a control unit for the PTC conversion, including the switching system

Wiring Diagram



- (1) ATEX Zone 1/21 or 2/22 with at least 1 thermal sensor PTC type
 (2) ATEX certified control unit conversion / insulation / switching system
 (K72) ATEX certified PTC relay

BLEMO[®] ***Frequenzumrichter***

Siemensstraße 4
D-63110 Rodgau – Dudenhofen

Tel.: +49 / 6106 / 82 95-0

Fax: +49 / 6106 / 82 95-20

Internet: www.blemo.com

E-Mail: info@blemo.com